

STORM

MANUAL

Antec®

BELIEVE IT

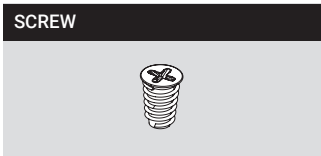
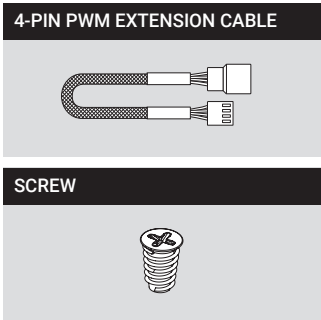
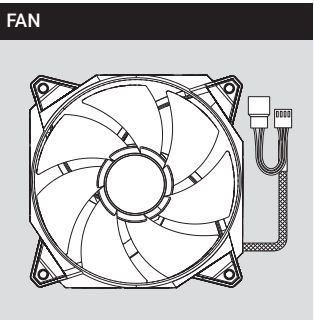
www.Antec.com

All rights reserved. Specifications are subject to change without prior notice. Actual products and accessories may differ from illustrations. Omissions and printing errors excepted. Content of delivery might differ in different countries or areas. Some trademarks may be claimed as the property of others.

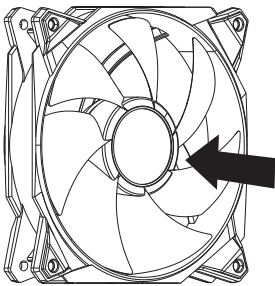
V2.2

©1986 – 2022 Antec, Inc. All rights reserved.

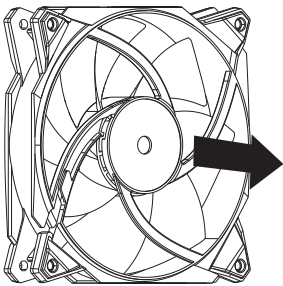
1 CONTENTS



2 FAN INTRODUCTION



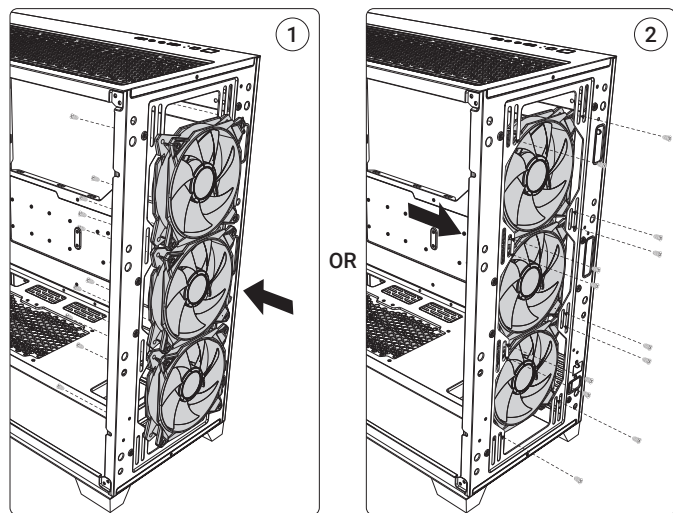
AIR - IN



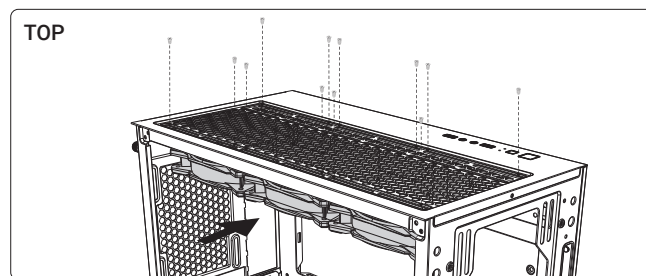
AIR - OUT

3 FAN INSTALLATION

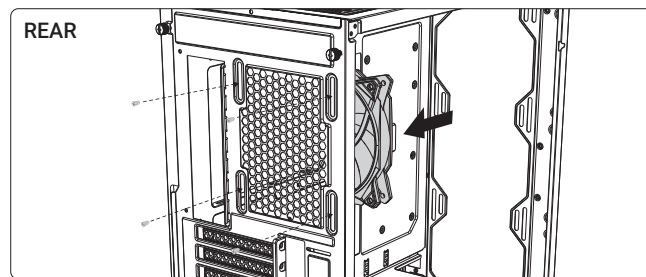
FRONT



TOP



REAR



4 FAN CONNECTION

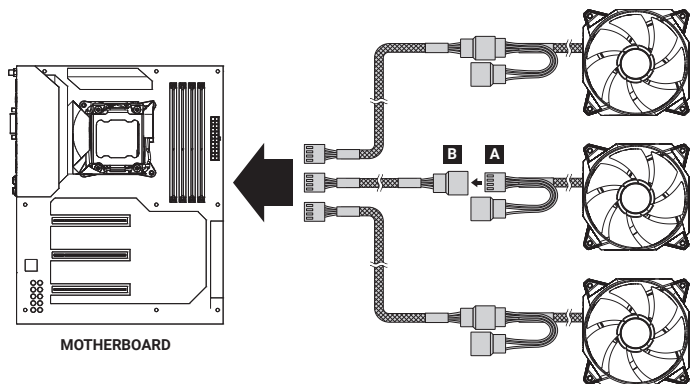


A PWM 4-pin male header

B PWM 4-pin female header

OPTION A :

- Connect the 4-pin connector with the 4-pin PWM extension cable, connect the 4-pin connector to the motherboard.



OPTION B :

- Connect the 4-pin connector to the 4-pin Daisy-chain to make fans work in sync.
- Connect the 4-pin connector with the 4-pin PWM extension cable, and connect the 4-pin connector to the motherboard.

